



Application

- It is applicable to household water supply, equipment support, pipeline pressurization, garden watering, vegetable greenhouse watering, fish farming and poultry raising, industrial and mining, water supply and drainage of enterprises and high-rise buildings, central air conditioner and centralized heating circulation system, etc.

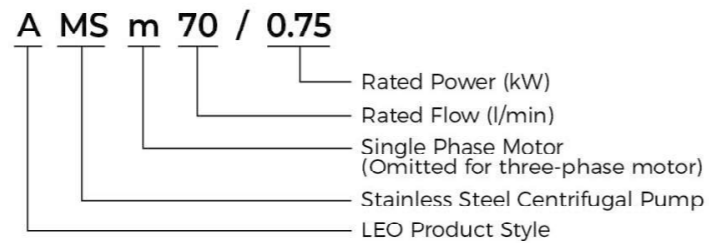
Pump

- AISI 304 pump body
- AISI 304 shaft
- Max.liquid temperature: +85°C
- Altitude: up to 1000 m (A motor with more power is required in case the altitude is above 1000 m.)

Motor

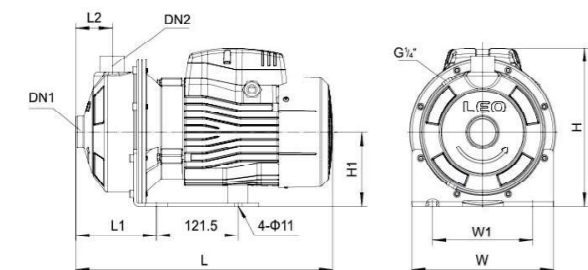
- Low noise&Long life bearing
- Built-in thermal protector for single phase motor
- Insulation class: F
- Protection class: IPX4
- Max. ambient temperature: +40°C

Identification Codes



Technical Data

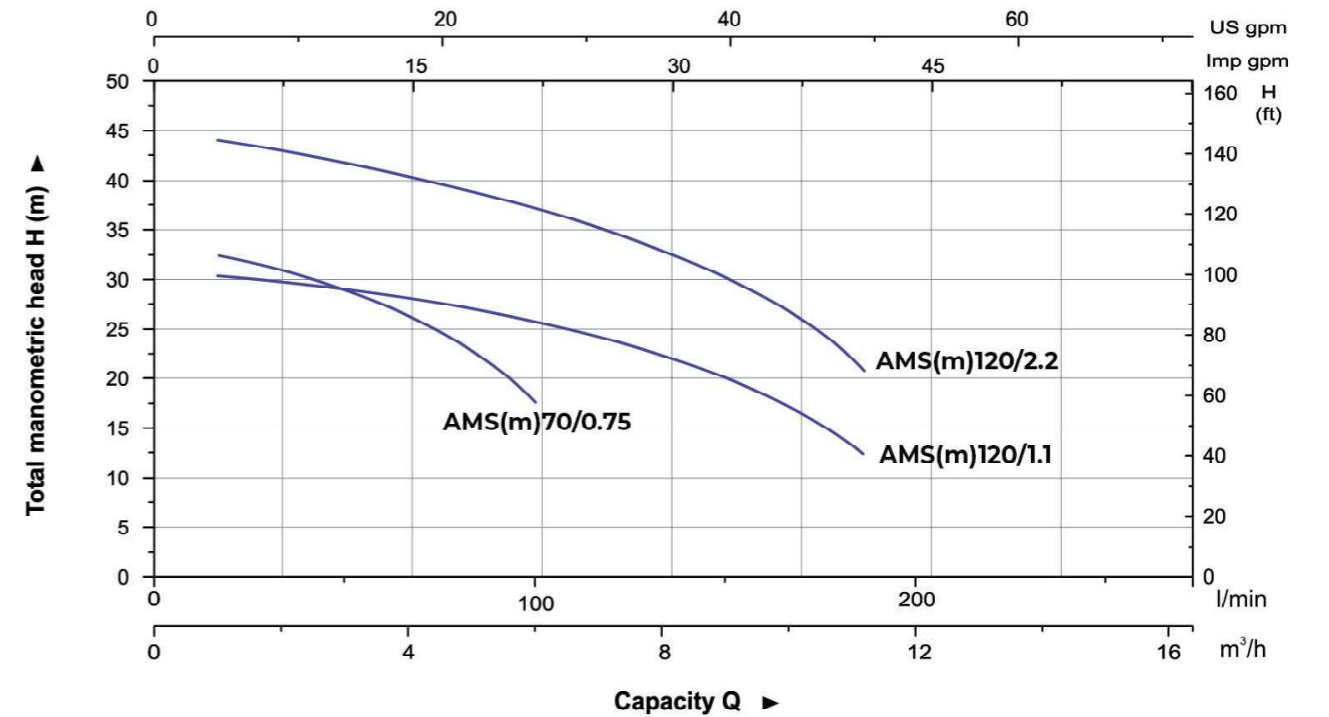
| Model | | Power | | Q(m³/h) | | | | | | | | | | | | | | | | | | | |
|--------------|-------------|-------|-----|----------|------|------|------|------|------|------|------|------|------|------|--|--|--|--|--|--|--|--|--|
| Single Phase | Three Phase | kW | HP | 0 | 1.8 | 2.4 | 3.6 | 4.8 | 6 | 7.2 | 8.4 | 9.6 | 10.8 | | | | | | | | | | |
| | | | | Q(l/min) | 0 | 30 | 40 | 60 | 80 | 100 | 120 | 140 | 160 | 180 | | | | | | | | | |
| AMSm70/0.75 | AMS70/0.75 | 0.75 | 1.0 | H (m) | 32.3 | 29.7 | 28.7 | 26.2 | 22.8 | 16.7 | - | - | - | - | | | | | | | | | |
| AMSm120/1.1 | AMS120/1.1 | 1.1 | 1.5 | | 32.9 | - | - | 28.6 | 27.0 | 25.2 | 23.0 | 21.0 | 17.8 | 14.6 | | | | | | | | | |
| AMSm120/2.2 | AMS120/2.2 | 2.2 | 3.0 | | 44.9 | - | - | 41.1 | 39.2 | 36.8 | 33.5 | 31.6 | 28.2 | 20.2 | | | | | | | | | |



Dimension

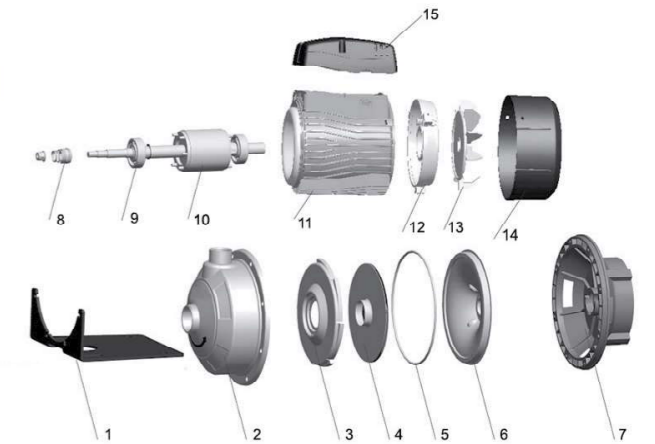
| Model | DN1 | DN2 | L (mm) | W (mm) | H (mm) | L1 (mm) | L2 (mm) | W1 (mm) | H1 (mm) |
|---------------|--------|-----|--------|--------|--------|---------|---------|---------|---------|
| AMS(m)70/0.75 | | | 381 | 210 | 234 | 109 | 55 | 149 | 110 |
| AMS(m)120/1.1 | 1 1/4" | 1" | 381 | 210 | 234 | 119 | 55 | 149 | 110 |
| AMS(m)120/2.2 | | | 429 | 210 | 250 | 119 | 55 | 149 | 110 |

Hydraulic Performance Curves



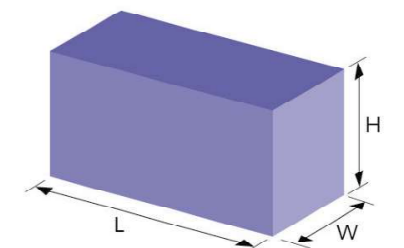
Materials Table

| No. | Part | Material | No. | Part | Material |
|-----|-----------------|----------------|-----|--------------|----------|
| 1 | Bottom support | Steel | 11 | Stator | |
| 2 | Pump body | AISI 304 | 12 | Rear housing | ADC12 |
| 3 | Diffuser | AISI 304 | 13 | Fan | PP |
| 4 | Impeller | AISI 304 | 14 | Fan cover | PP |
| 5 | O-ring | NBR | 15 | Terminal box | ABS |
| 6 | Airproof plate | AISI 304 | | | |
| 7 | Support | ADC12 | | | |
| 8 | Mechanical seal | Carbon/Ceramic | | | |
| 9 | Ball bearing | | | | |
| 10 | Rotor | | | | |



Package Information

| Model | GW (Kgs) | L (mm) | W (mm) | H (mm) | Quantity (PCS/20'TEU) |
|---------------|----------|--------|--------|--------|-----------------------|
| AMS(m)70/0.75 | 13.9 | 410 | 240 | 270 | 1072 |
| AMS(m)120/1.1 | 15.4 | 410 | 240 | 270 | 1072 |
| AMS(m)120/2.2 | 20.8 | 465 | 240 | 270 | 864 |





Application

- It is applicable to household water supply, equipment support, pipeline pressurization, garden watering, vegetable greenhouse watering, fish farming and poultry raising, industrial and mining, water supply and drainage of enterprises and high-rise buildings, central air conditioner and centralized heating circulation system, etc.

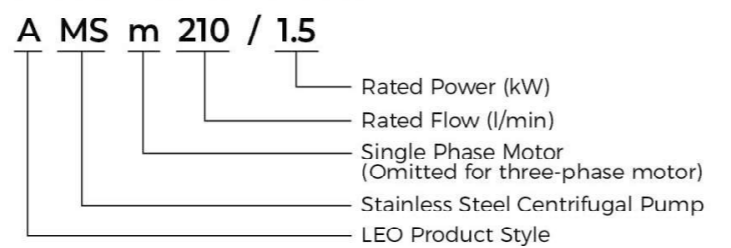
Pump

- AISI 304 pump body
- AISI 304 shaft
- Max.liquid temperature: +85°C
- Altitude: up to 1000 m (A motor with more power is required in case the altitude is above 1000 m.)

Motor

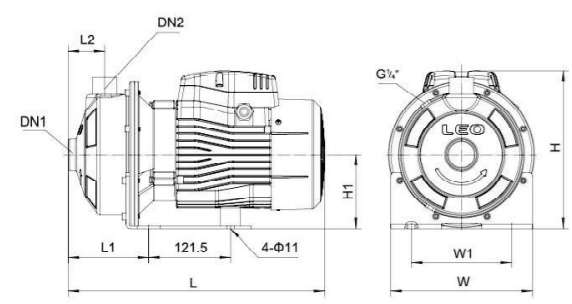
- Low noise&Long life bearing
- Built-in thermal protector for single phase motor
- Insulation class: F
- Protection class: IPX4
- Max. ambient temperture: +40°C

Identification Codes



Technical Data

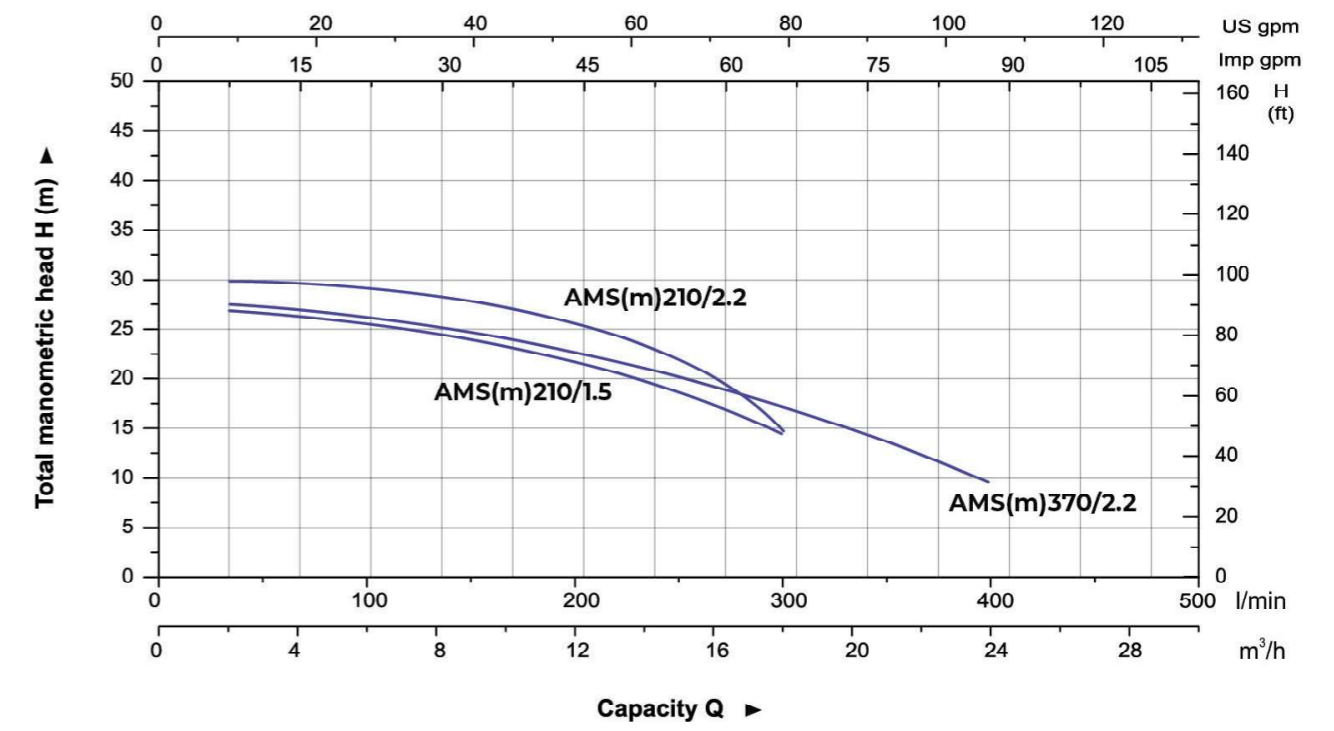
| Model | | Power | | Q(m³/h) | | | | | | | | | | | | | | | | | | | | |
|--------------|-------------|-------|-----|----------|------|------|------|------|------|------|------|------|------|-----|--|--|--|--|--|--|--|--|--|--|
| Single Phase | Three Phase | kW | HP | 0 | 7.2 | 8.4 | 9.6 | 10.8 | 12 | 15 | 18 | 21 | 24 | | | | | | | | | | | |
| | | | | Q(l/min) | 0 | 120 | 140 | 160 | 180 | 200 | 250 | 300 | 350 | 400 | | | | | | | | | | |
| AMSm210/1.5 | AMS210/1.5 | 1.5 | 2.0 | H (m) | 27.5 | 24.9 | 23.9 | 23.1 | 22.1 | 21.0 | 18.1 | 14.5 | - | - | | | | | | | | | | |
| AMSm210/2.2 | AMS210/2.2 | 2.2 | 3.0 | | 30.1 | 29 | 28.7 | 28 | 26.7 | 25.8 | 22.9 | 14.7 | - | - | | | | | | | | | | |
| AMSm370/2.2 | AMS370/2.2 | 2.2 | 3.0 | | 27.7 | - | - | - | 23.5 | 22.8 | 20.4 | 17.2 | 13.7 | 9.6 | | | | | | | | | | |



Dimension

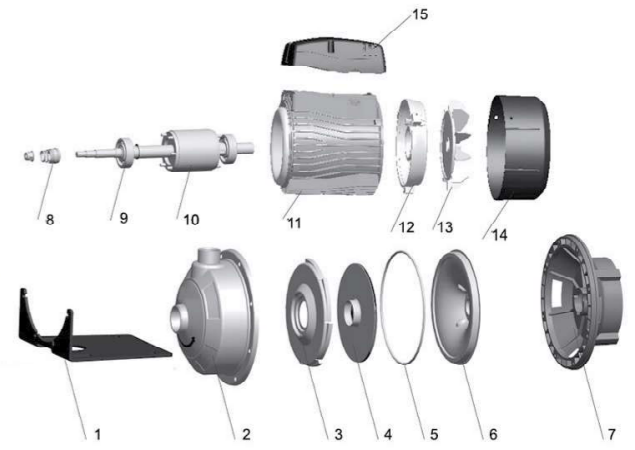
| Model | DN1 | DN2 | L (mm) | W (mm) | H (mm) | L1 (mm) | L2 (mm) | W1 (mm) | H1 (mm) |
|---------------|--------|--------|--------|--------|--------|---------|---------|---------|---------|
| AMS(m)210/1.5 | 1 1/2" | 1 1/4" | 440 | 210 | 250 | 119 | 55 | 149 | 110 |
| AMS(m)210/2.2 | | | | | | | | | |
| AMS(m)370/2.2 | 2" | | | | | | | | |

Hydraulic Performance Curves



Materials Table

| No. | Part | Material | No. | Part | Material |
|-----|-----------------|----------------|-----|--------------|----------|
| 1 | Bottom support | Steel | 11 | Stator | |
| 2 | Pump body | AISI 304 | 12 | Rear housing | ADC12 |
| 3 | Diffuser | AISI 304 | 13 | Fan | PP |
| 4 | Impeller | AISI 304 | 14 | Fan cover | PP |
| 5 | O-ring | NBR | 15 | Terminal box | ABS |
| 6 | Airproof plate | AISI 304 | | | |
| 7 | Support | ADC12 | | | |
| 8 | Mechanical seal | Carbon/Ceramic | | | |
| 9 | Ball bearing | | | | |
| 10 | Rotor | | | | |



Package Information

| Model | GW (Kgs) | L (mm) | W (mm) | H (mm) | Quantity (PCS/20'TEU) |
|---------------|----------|--------|--------|--------|-----------------------|
| AMS(m)210/1.5 | 18 | 465 | 240 | 270 | 864 |
| AMS(m)210/2.2 | 20 | 465 | 240 | 270 | 864 |
| AMS(m)370/2.2 | 20.8 | 465 | 240 | 270 | 864 |

